

PART OF N.E. 1/4  
SECTION 8, T.6N.,R.1W., S.L.B.&M.

IN OGDEN CITY AND WEBER COUNTY

TAXING UNIT: 437,25

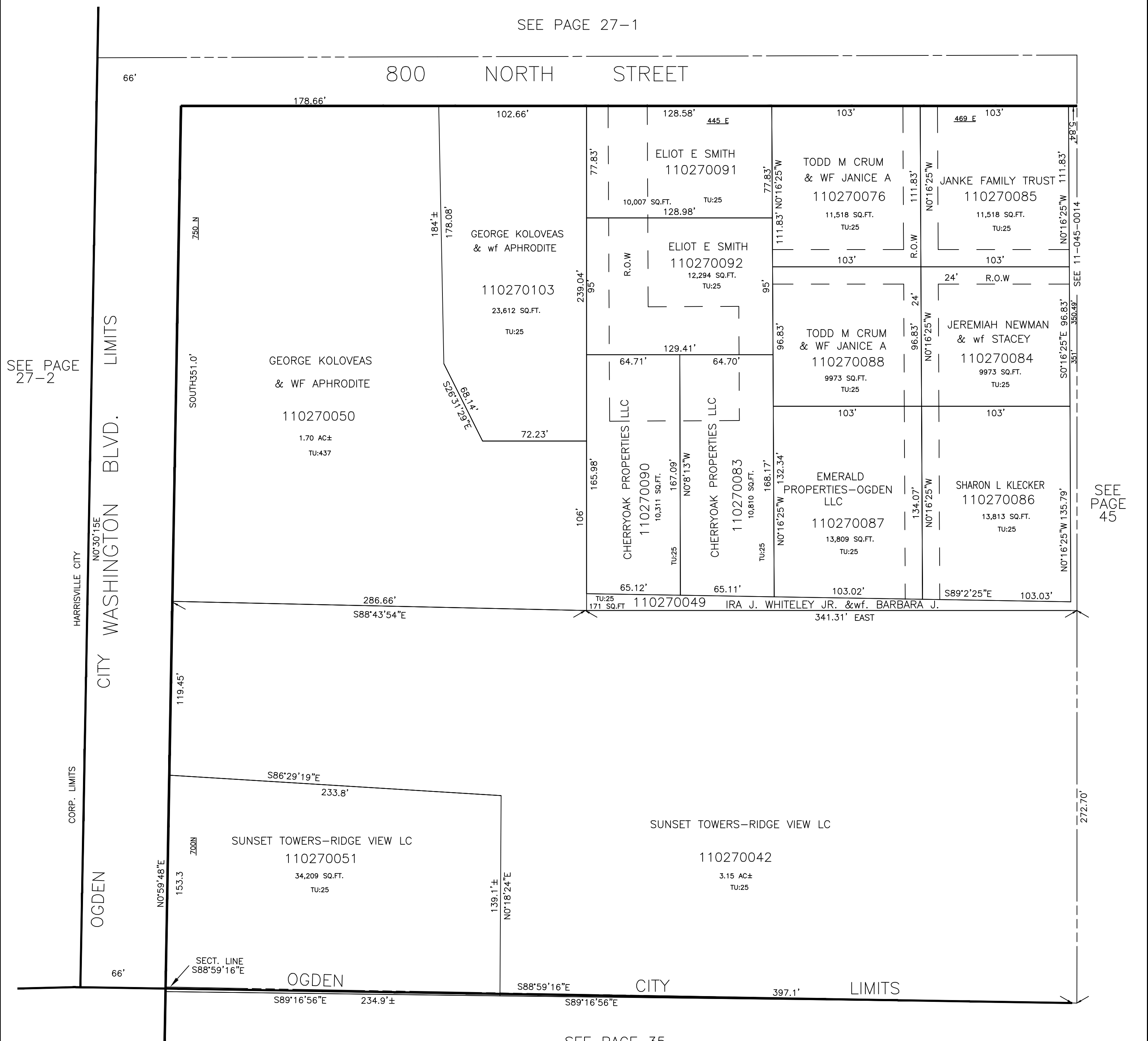
SCALE 1" = 50'

SEE PAGE 27-1

66' 800 NORTH STREET

SEE PAGE 27-2

SEE PAGE 45



SEE PAGE 35